

**PORTO TORRES – CASA DELLA MERIDIANA - 1<sup>ST</sup> WAY (RED CIRCLE)**

From **Porto Torres – CITY CENTER** take the **S.S.131** road, toward Sassari .



At the shopping center **Auchan (Z.I.)** exit toward **ALGERO - FERTILIA (S.S. 291)**.



At 1km turn on right, exit **BANCALI** (after **Conforama** store).



At the roundabout turn twice right for **BANCALI (SP18)**. Roundabout coordinates lat. 40.732495 , Long. 8.51979



Just after the traffic sign **1-Km17**, take the street **S.V. Serra di Lioni** on the right.



At 100m keep the Virgin statue on your left and take the **S.V montalè**.

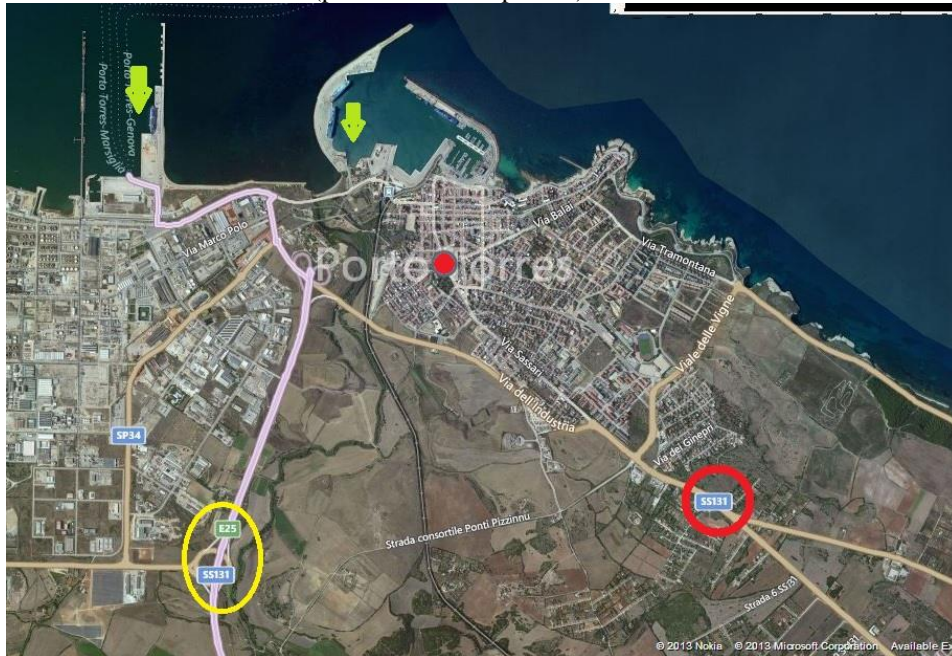


Continue straight for 600m. *Casa della meridiana* is at n° 8



### PORTO TORRES – CASA DELLA MERIDIANA - 2<sup>DP</sup> WAY (YELLOW CIRCLE)

From the port take the road S.S.131 – **E 25** (pink road on the picture) toward Sassari.



After 20km, exit to **SASSARI** (S.S.291).

On the arrival above Sassari, after the traffic-sign **3-SS 291**, turn immediately twice on right for **Bancali** (SP18)



Just after the traffic sign **1-Km17**, take the street *S.V. Serra di Lions* on the right



At 100m, keep the Virgin statue on your left and take the *S.V Montalè*



Continue straight for 600m. *Casa della meridiana* is at n° 8

